

CONTENTS

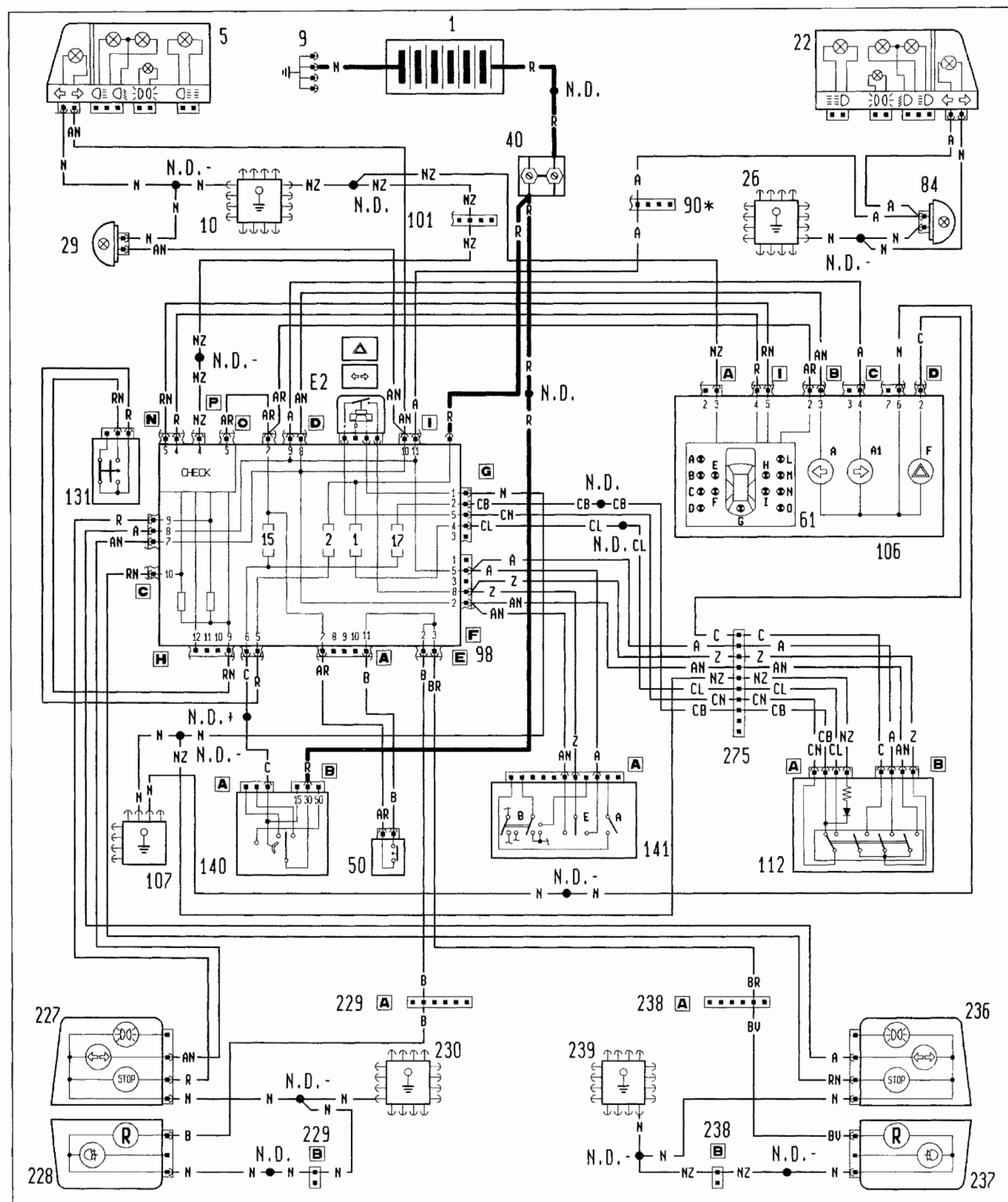
page

- Wiring diagrams (*)	1
- Key	9

(*) For aspects not covered in the following pages, see the diagrams contained in Sec. 55 of the '93 range manual, publication no. 505.982/01

1995 16v - 1995 16v turbo models

Direction indicators and warning lamp - Hazard warning lights and warning lamp - Reversing lights - Braking lights - (See key following diagrams)



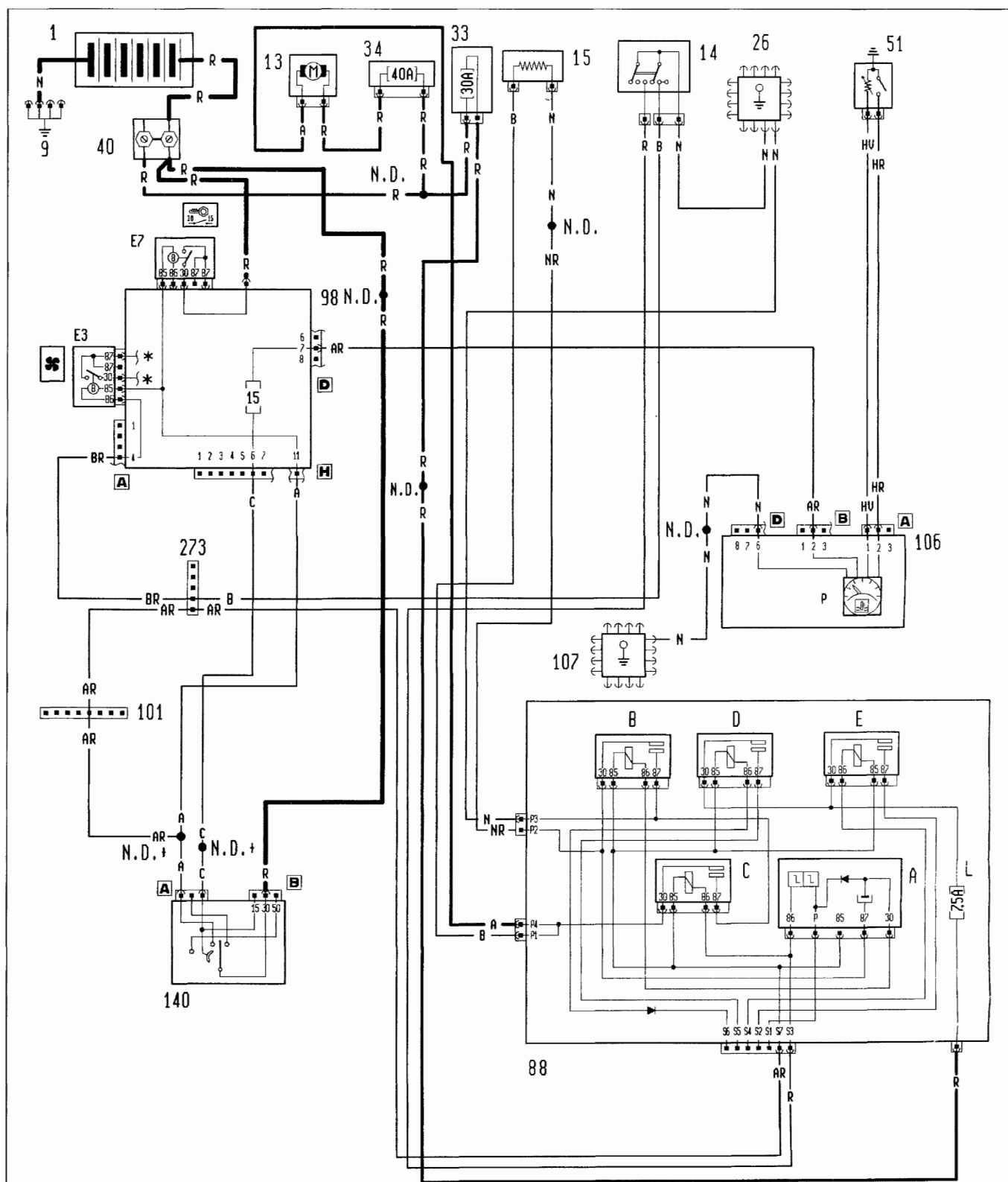
* Only for Turbo version

P3D012L01

55.

'94 range

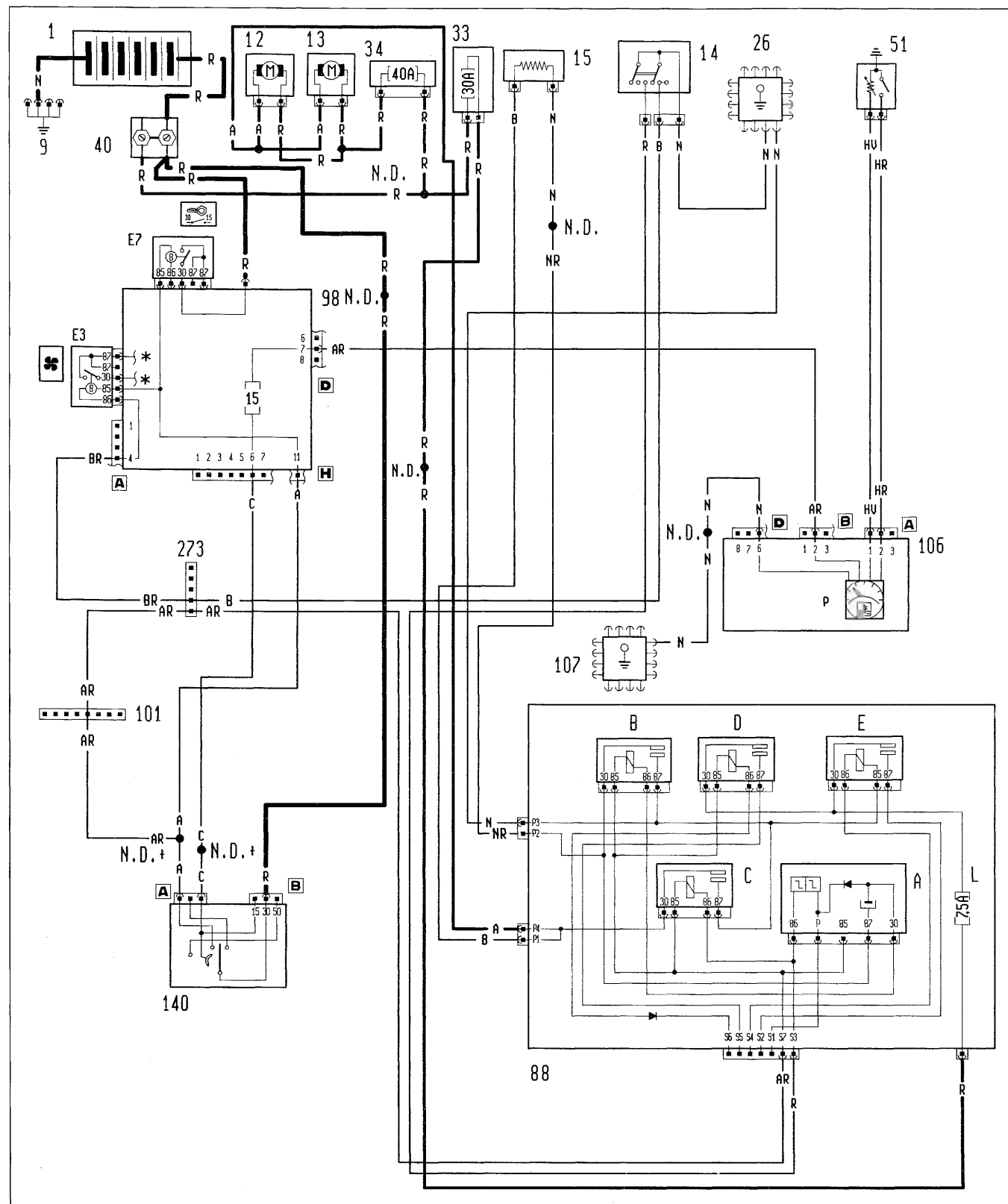
Engine cooling system - Water temperature gauge - (See key following diagrams)



P3D02LZ01

1995 16v turbo model with automatic air conditioner

Engine cooling system - Water temperature gauge - (See key following diagrams)



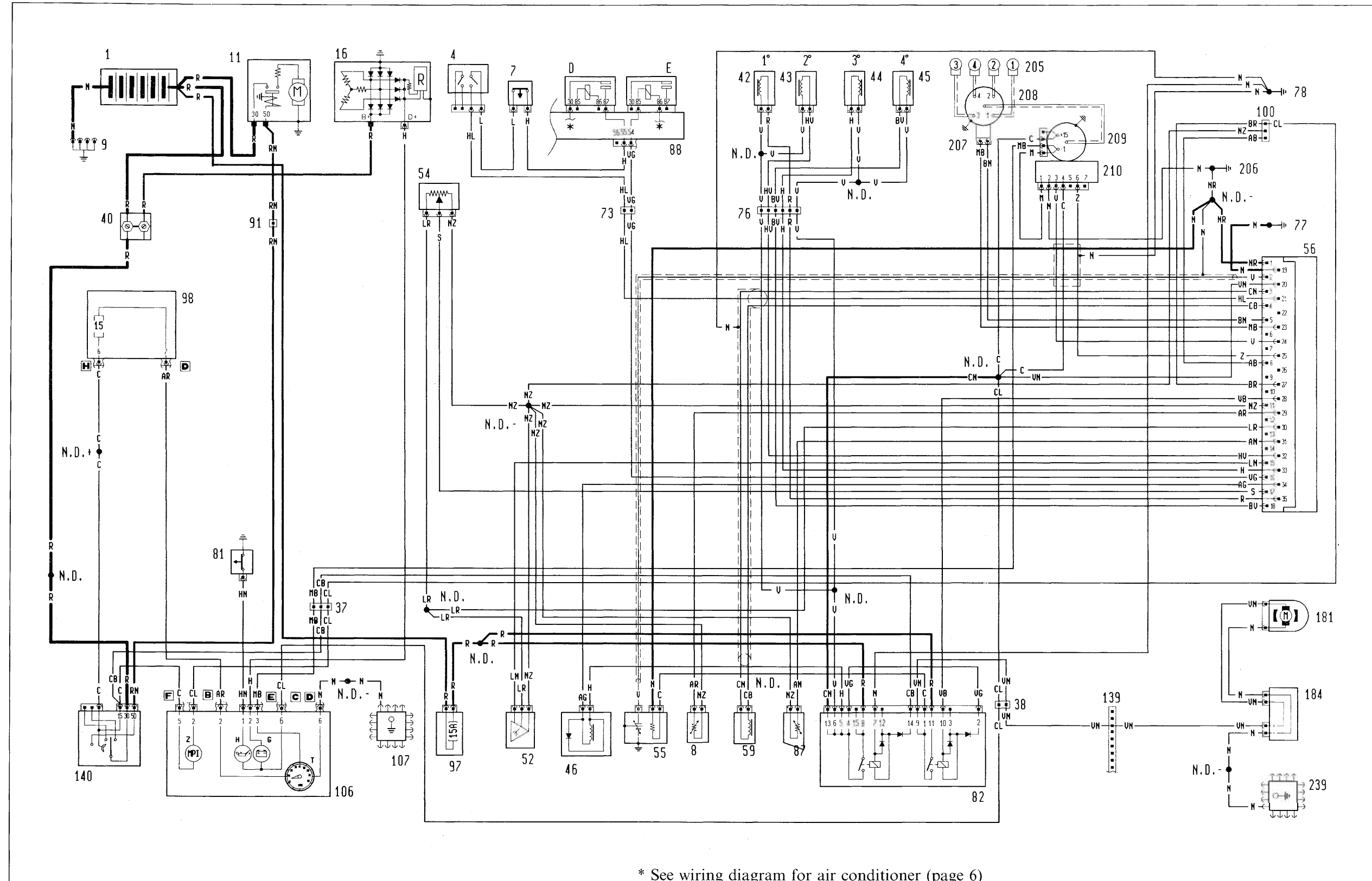
* See wiring diagram for automatic air conditioner (page 7)

P3D03LZ01

55.

1995 16v model

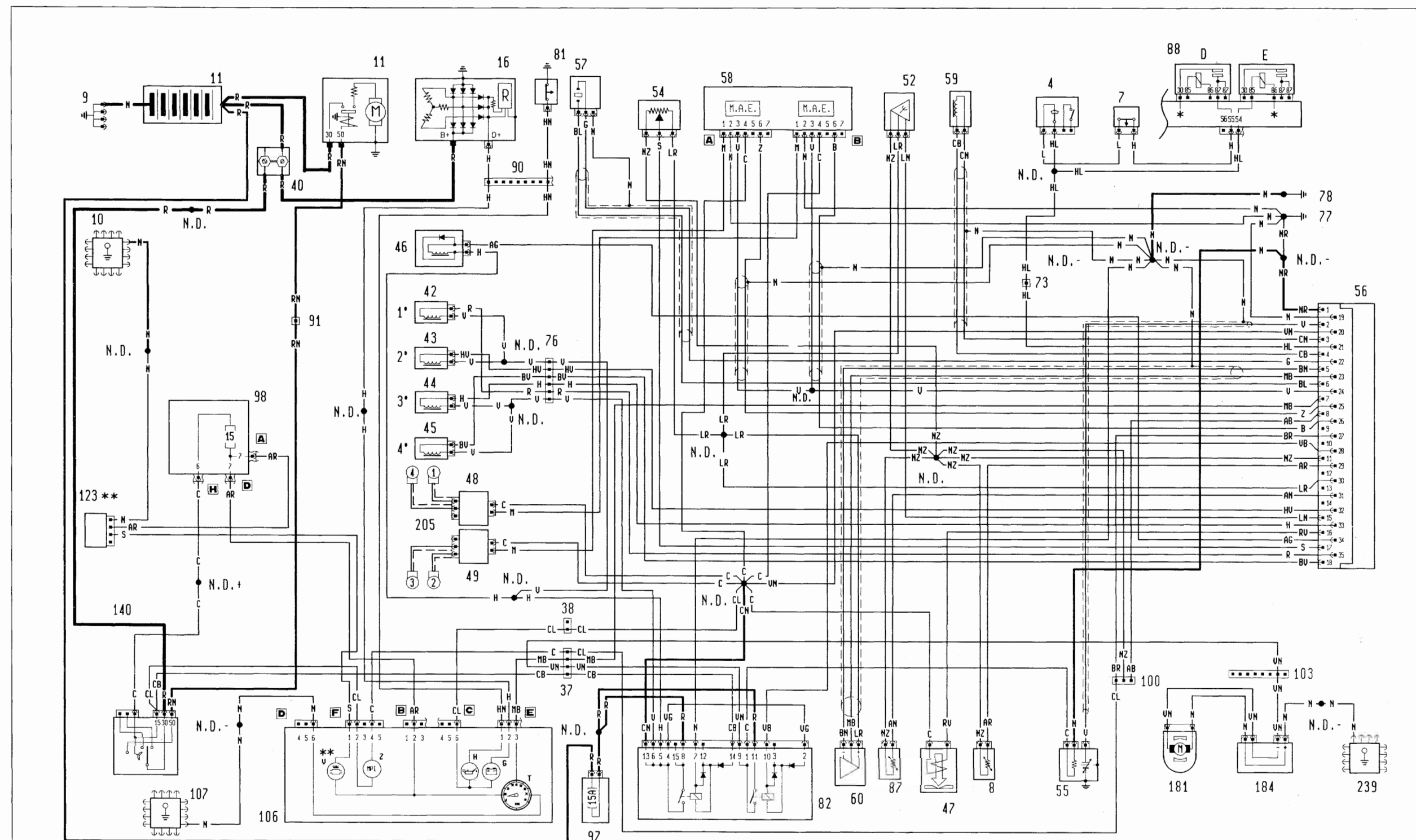
Starter - Electronic ignition and fuel injection (I.A.W.) - Recharging system and warning light - Low engine oil pressure warning light - Fuel injection fault warning light - Rev counter - (See key following diagrams)



* See wiring diagram for air conditioner (page 6)

1995 16v turbo models

Starter - Electronic ignition and fuel injection (I.A.W.) - Recharging system and warning light - Low engine oil pressure warning light - Fuel injection fault warning light - Catalytic converter overheating warning light - Rev counter - (See key following diagrams)

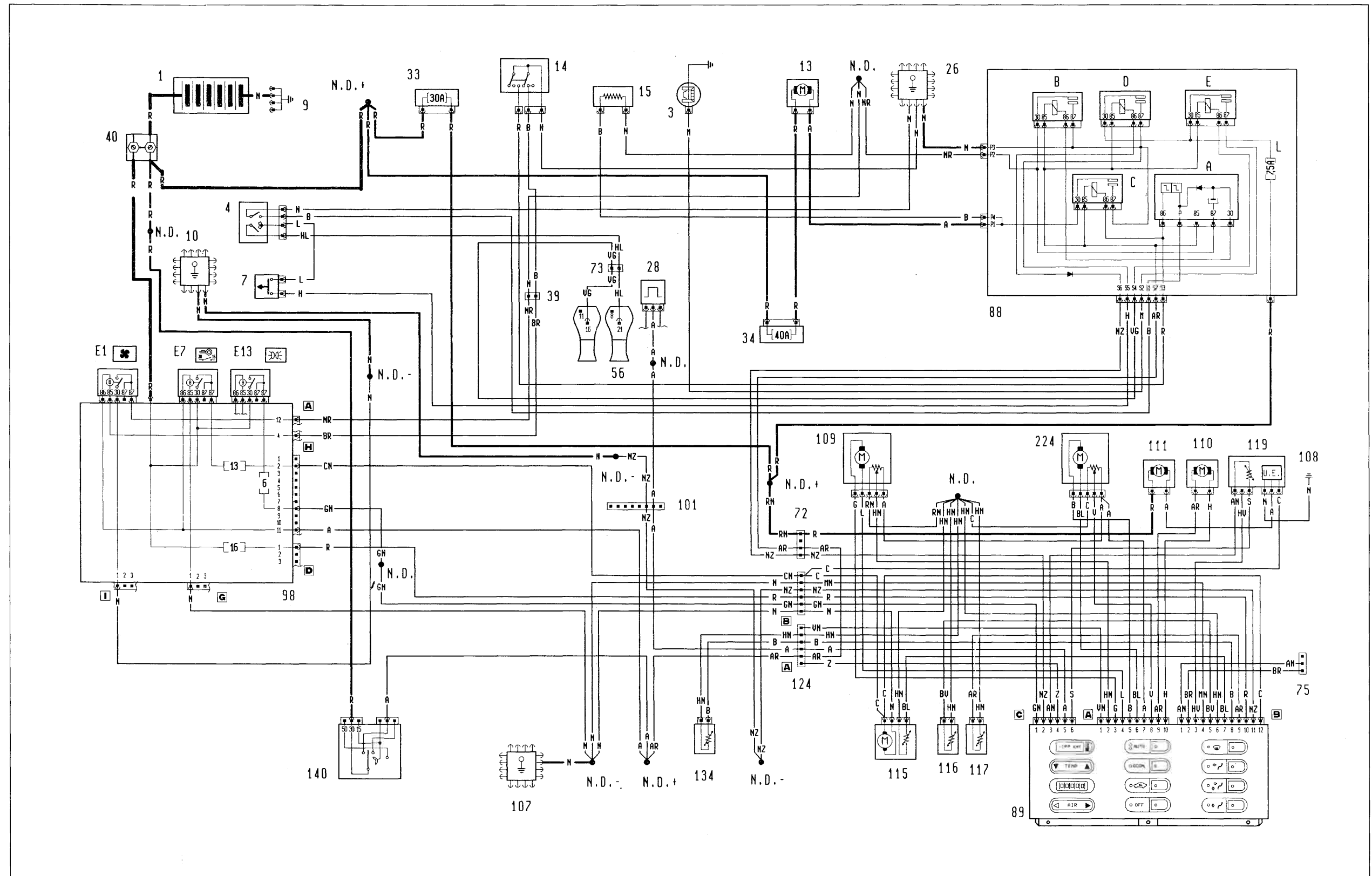


* See wiring diagram for air conditioner (page 6)

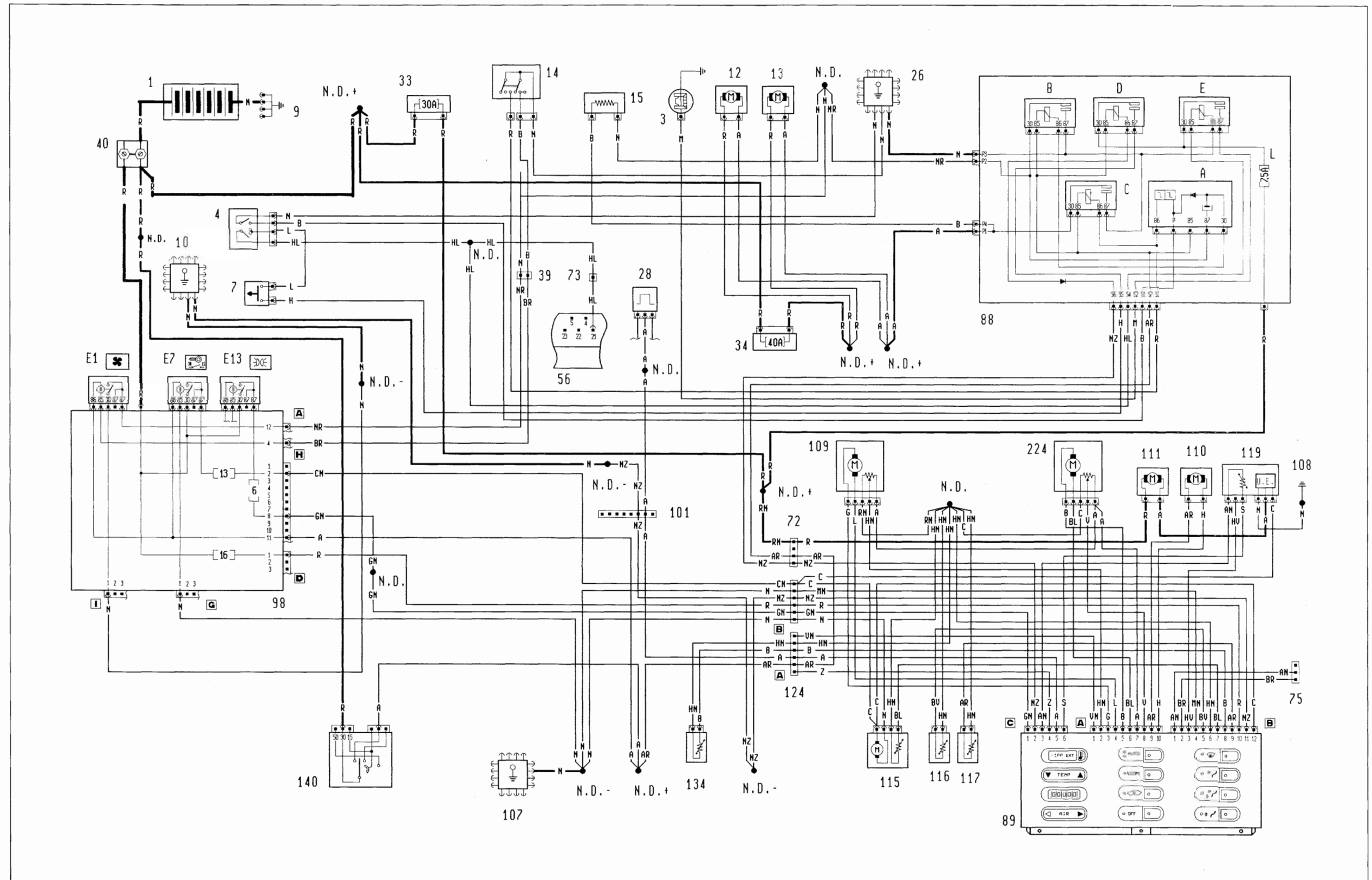
** Only for Japanese version

55.

1995 16v model
Automatic air conditioner - (See key following diagrams)



1995 16v turbo model
Automatic air conditioner - (See key following diagrams)



Key to components

- 1 Battery
- 3 Compressor for air conditioner
- 4 Three-stage pressure-switch for air conditioner
- 5 Front left lights cluster
- 7 Minimum pressure switch (anti-frost)
- 8 Engine coolant temperature sensor
- 9 Battery earth
- 10 Front left earth
- 11 Starter motor
- 12 Engine cooling fan (2nd)
- 13 Engine cooling fan
- 14 Double-contact thermostat on radiator
- 15 Resistor for switching on engine cooling fan low speed
- 16 Alternator
- 22 Front right lights cluster
- 26 Front right earth
- 28 Pulse generator for speedometer signal
- 29 Front left side repeater
- 33 30A fuse protecting air conditioning system
- 34 40A fuse protecting engine cooling fan
- 37 Connection between engine compartment cables/fuel injection cables
- 38 Dashboard cable/fuel injection cables connection
- 39 Connection between front cables/air conditioner cables
- 40 Connector block
- 42 1st Fuel injector
- 43 2nd Fuel injector
- 44 3rd Fuel injector
- 45 4th Fuel injector
- 46 Air solenoid
- 47 Over-boost solenoid
- 48 Ignition coils assembly
- 49 Ignition coils assembly
- 50 Reversing light switch
- 51 Engine coolant temperature sender unit and coolant overheating indicator switch
- 52 Absolute pressure sensor
- 54 Potentiometer on throttle valve
- 55 Heated Lambda probe
- 56 I.A.W. electronic fuel injection/ignition control unit
- 57 Knock sensor
- 58 Electronic ignition module
- 59 T.D.C. sensor
- 60 Timing sensor
- 61 Check system:
 - A Low coolant level warning light

- B Low washer fluid warning light
- C Low engine oil level warning light
- D Left brake light fault warning light
- E Front left door open warning light
- F Rear left door open warning light
- G Tailgate open warning light
- H Front right door open warning light
- I Rear right door open warning light
- L Front fog lamps fault warning light
- M Side lights fault warning light
- N Number plate light fault warning light
- O Right brake light fault warning light
- 72 Air conditioner cable connection
- 73 Connection between engine bay cables/fuel injection-air conditioner cables
- 75 Diagnostic socket for air conditioner
- 76 Fuel injection cables connection
- 77 Earth on engine
- 78 Earth for electronic fuel injection
- 81 Low oil pressure warning light switch
- 82 Multiple relay
- 84 Front right side repeater
- 87 Air temperature sensor
- 88 Air conditioner fuse and relay unit:
 - A Timer for activating engine cooling fan 2nd speed
 - B Relay for activating engine cooling fan 1st speed
 - C Relay for activating engine cooling fan 2nd speed
 - D Auxiliary relay for activating compressor coupling
 - E Relay for activating compressor coupling
 - L 7.5A fuse protecting air conditioning system
- 89 Air conditioner ECU
- 90 Front right engine bay cables connection
- 91 Engine cables connection
- 97 15A fuse protecting heating of Lambda probe, fuel injectors, electric fuel pump and fuel injection system

- 98 Fuse and relay unit
E2 Indicators - hazard lights flasher
E3 Engine cooling fan relay
E7 Ignition switch discharge relay
E13 Parking lights relay
100 Diagnostic socket for electronic fuel injection
101 Engine bay cables/dashboard connection
103 Connection between front cables/rear cables for controlled damping suspension
106 Instrument panel:
A Left direction indicator warning light
A1 Right direction indicator warning light
F Hazard warning lights warning lamp
G Low recharging warning light
H Low engine oil pressure warning light
P Water temperature gauge
T Rev counter
V Catalytic converter overheating warning light
Z Electronic fuel injection fault warning light
107 Earth on left dashboard
108 Earth on left dashboard
109 Mixed air flap control actuator
110 External/recirculation air flap control actuator
111 Air conditioner fan
112 Hazard warning lights switch
115 Car interior temperature sensor with fan
116 Treated air temperature sensor (2nd)
117 Treated air temperature sensor (1st)
119 Electric speed variator for electric fan
123 Catalytic converter temperature control unit
124 Connection between air conditioner/heater cables
131 Stop lights switch
134 External temperature sensor
139 Dashboard cables/rear cables connection
140 Ignition switch
141 Stalk unit:
A Rear fog lamps switch
B Exterior lights switch
C Controls illumination bulbs
D Flasher button
E Direction indicators stalk
F Dipped/main beam headlamp selector
181 Electric fuel pump
184 Tank cover
205 Spark plugs

- 206 Engine earth
208 Ignition distributor
210 Power module for electronic ignition
224 Distribution flap control actuator
227 Rear left lights cluster
228 Rear left combined lights cluster
229 Connection between rear cables with tailgate cables on left side
230 Rear left earth
236 Rear right lights cluster
237 Rear right lights cluster
238 Connection between rear cables/tailgate cables on right side
239 Rear right earth
273 Connection between front cables/air conditioner cables
275 Connection between dashboard cables/hazard lights cables

List of fuses in the fuse unit 98

Fuse 1	10A	Fuse 13	20A
Fuse 2	25A	Fuse 14	30A
Fuse 3	20A	Fuse 15	15A
Fuse 4	25A	Fuse 16	10A
Fuse 5	10A	Fuse 17	7.5A
Fuse 6	10A	Fuse 18	20A
Fuse 7	10A	Fuse 19	20A
Fuse 8	10A	Fuse 20	30A
Fuse 9	15A	Fuse 21	30A
Fuse 10	15A	Fuse 22	25A
Fuse 11	7.5A	Fuse 23	25A
Fuse 12	25A	Fuse 24	7.5A

Cable colour codes

A	Light blue	GN	Yellow-Black
B	White	GL	Yellow-Blue
C	Orange	GR	Yellow-Red
G	Yellow	GV	Yellow-Green
H	Grey	HG	Grey-Yellow
L	Blue	HN	Grey-Black
M	Brown	HR	Grey-Red
N	Black	HV	Grey-Green
R	Red	LB	Blue-White
S	Pink	LG	Blue-Yellow
V	Green	LN	Blue-Black
Z	Purple	LR	Blue-Red
AB	Light blue-White	LV	Blue-Green
AG	Light blue-Yellow	MB	Brown-White
AN	Light blue-Black	MN	Brown-Black
AR	Light blue-Red	NZ	Black-Purple
AV	Light blue-Purple	RB	Red-White
BG	White-Yellow	RG	Red-Yellow
BL	White-Blue	RN	Red-Black
BN	White-Black	RV	Red-Green
BR	White-Red	SN	Pink-Black
BV	White-Green	VB	Green-White
BZ	White-Purple	VN	Green-Black
CA	Orange-Light blue	VR	Green-Red
CB	Orange-White	ZB	Purple-White
CN	Orange-Black		